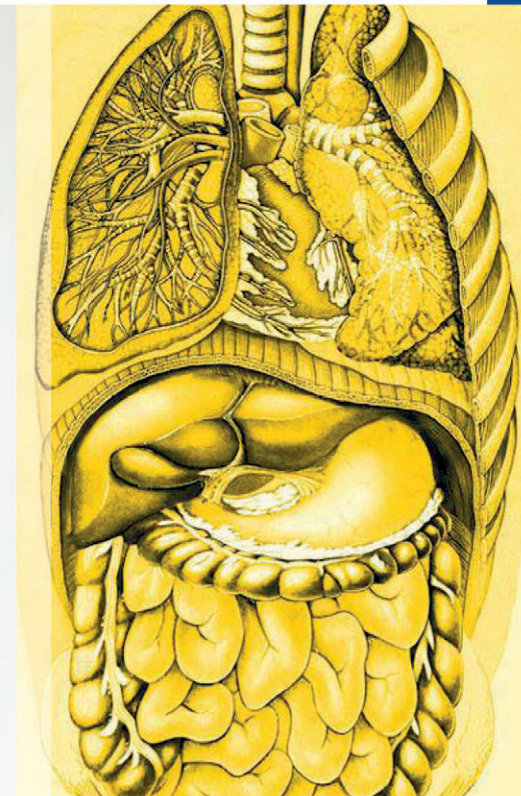


**MEDICAL EXPERT TRAINING
IN ADVANCED ESD,
POEM AND EST**

SEPTEMBER 17-18, 2015

ATHENS, GREECE



→ INTRODUCTION

Endoscopic Submucosal Dissection (ESD) has shown over the last years its great potential to enable endoscopic en-block resection of early lesions in the GI tract and thus make the therapy potentially less invasive. Still, the technique is time consuming and requires a high level of skill in order to be performed safely. Per Oral Endoscopic Myotomy (POEM) and Endoscopic Submucosal Tunneling (EST) are becoming additional highly potential treatment for not only esophageal achalasia, but also for various types of GIT diseases. This Medical Expert Training offers the opportunity to learn directly from highly experienced European trainers. The training course will give a comprehensive overview on the indications and clinical data of ESD, POEM and EST in Europe. The main focus will be intensive hands-on training in wet lab environment.

→ CONCEPT

Learning targets are: complete ESD, POEM, tunneling including marking, incision, and dissection, complication management, and tips and tricks in ESD.

The Medical Expert Training addresses physicians with high experience in interventional endo-scopic procedures and initial clinical ESD experience.

→ FACULTY

Prof. Hubert Piessevaux
Prof. Jan Martínek
Dr. Ondřej Urban
Dr. Stefanos Bassioukas

→ GENERAL INFORMATION

Registration and Registration Fee

Please contact your local Olympus representative

Training Location

ELPEN Laboratories and Research Centre
95 Marathonos Av.
19009 Athens, Greece
www.elpen.gr

Shuttle buses will be provided between the hotel and the training location.

Hotel Information

We have arranged a hotel in Athens and will provide you with the details before the beginning of the Medical Expert Training.

Further Information

Should you require further information, please contact your local Olympus representative.

→ AGENDA

Day One

- 8:00** Transfer from the hotel to Elpen Labs
- 9:00** Welcome and Introduction
- 9:10** ESD - from learning to doing (O. Urban)
- 9:40** Esophageal ESD: SCC and Barrett's (H. Piessevaux)
- 10:10** Endoscopic treatment of Barrett's esophagus related neoplasia (J. Martinek)
- 10:40** Coffee Break
- 11:10** Hands-on endoscopic training on live pigs
- 13:15** Lunch
- 14:00** Hands-on endoscopic training on live pigs
- 17:00** Three interesting case reports (EMR, ESD, POEM) with a discussion
- 18:00** Transfer to the hotel
- 19:30** Dinner

Day Two

- 8:00** Transfer from the hotel to Elpen Labs
- 9:00** Colorectal ESD in Western Europe (H. Piessevaux)
- 9:30** Limits of conventional EMR in the colon and in the rectum (O. Urban)
- 10:00** Submucosal endoscopy: POEM and beyond (J. Martinek)
- 10:30** Coffee Break
- 11:00** Hands-on endoscopic training on live pigs
- 13:15** Lunch
- 14:00** Hands-on endoscopic training on live pigs
- 16:45** Closing remarks
- 17:00** Transfer to the hotel
- 19:30** Dinner